



KND

D.O.O.
NOVI SAD
WWW.KND.RS

REZERVNI DELOVI TRAKTORA

MS SERİSİ HİDROLİK MOTORLAR MS SERIES HYDRAULIC MOTORS

ORDER CODE / SİPARİŞ KODU

	1	2	3	4	5	6	7	8
MS								



Pos.1 - Mounting Flange / Montaj Bağlantısı

- omit - SAE A-4 mount, four holes
ihmal - SAE A - 4 şekilli, dört delikli

- A** - SAE A-2 mount, two holes / SAE A-2 şekilli, iki delikli
F - Magneto mount, four holes / Manyetik şekilli, dört delikli
Q - Square mount, four holes / Kare şekilli, dört delikli
B - Motor with drum brake / Silindir frenli motor
S - Short mount / Kısa şekilli
V - Very short mount / Çok kısa şekilli
U - Ultra short mount / Ultra kısa şekilli
W - Wheel mount / Tekerlek şekilli

Pos.2 - Port type / Port tipi

- omit - Side ports
ihmal - Yan portlar

- E** - Rearports/ Arka Portlar

Pos.3 - Displacement code / Hacim kodu

- 80** - 80,5 cm³/rev
100 - 100,0 cm³/rev
125 - 125,7 cm³/rev
160 - 159,7 cm³/rev
200 - 200,0 cm³/rev
250 - 250,0 cm³/rev
315 - 314,9 cm³/rev
400 - 397,0 cm³/rev
475 - 474,6 cm³/rev
525 - 522,7 cm³/rev
565 - 564,9 cm³/rev

Pos.4 - Shaft Extensions* / Şaft Özellikleri

- omit - for B, S, U and V mounting flange / B, S, U ve V bağlantılı
- C** - ø32 straight, Parallelkey A10x8x45 DIN6885 / düz, paralel anahtarlı
CO - ø1¼" straight, Parallelkey 5/16" x 5/16" x ¼" BS46 / düz, paralel anahtarlı
K - ø35 tapered 1:10, Parallelkey B6x6x20 DIN6885 / Konik geçmeli paralel anahtarlı
SL - ø34,85 p.t.o. DIN9611 Form1
SH - ø1¼" splined 14T ANS B92.1-1970 / Frezelenmiş
SA - 7/8"-13T splined ANS B92.1-1970 / Frezelenmiş

Pos. 5 - Ports / Portlar

- omit - BSPP(ISO 228)
M - Metric / Metrik (ISO 262)

Pos. 6 - Actuating Direction / Tahrik Yönü

- R** - Right / Sağ
L - Left / Sol

Pos. 7 - Special Features / Özel Özellikleri

Pos. 8 - Design Series / Dizayn Serileri

- omit - Factory specified
ihmal - Fabrikada belirtilen

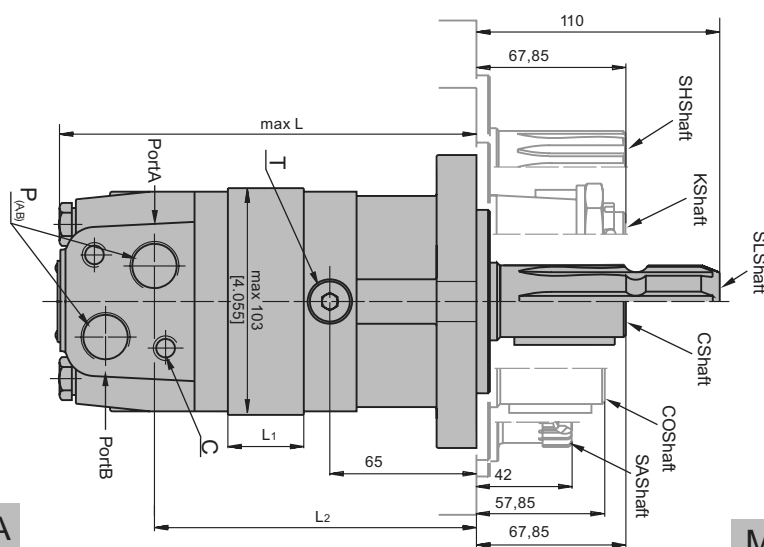


KND

D.O.O.
NOVI SAD
WWW.KND.RS

REZERVNI DELOVI TRAKTORA

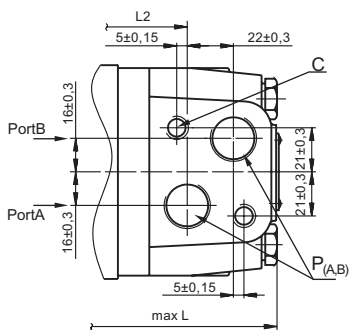
MS SERİSİ HİDROLİK MOTORLAR MS SERIES HYDRAULIC MOTORS



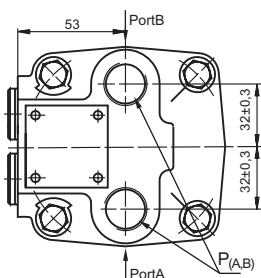
PORTING / BAĞLAMA

MOUNTING / MONTAJ

Side Ports / Yan Portlar

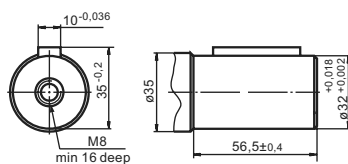


Rear Ports / Arka Portlar

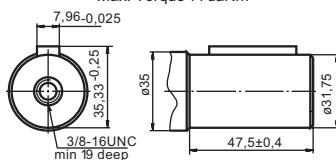


SHAFT EXTENSIONS/ SHAFT ÖZELLİKLERİ

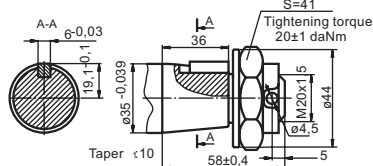
C - $\phi 32$ straight, Parallel key A10x8x45 DIN 6885
Max. Torque 77daNm



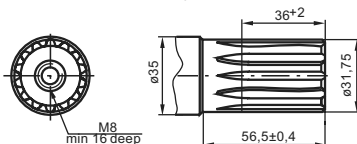
CO - $1\frac{1}{4}$ " straight, Parallel key $\frac{5}{16}$ "x $\frac{5}{16}$ "x $1\frac{1}{4}$ "BS46
Max. Torque 77daNm



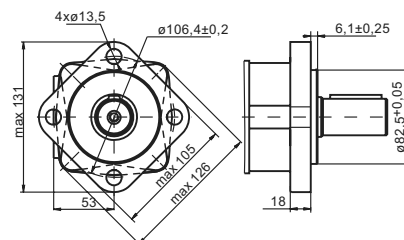
K - tapered 1:10, Parallel key B6x6x20 DIN 6885
Max torque 95 aNm



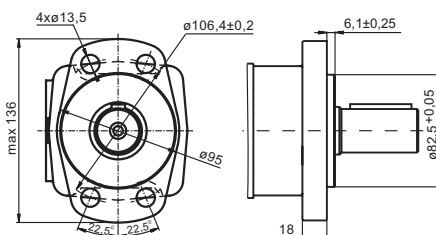
SH $1\frac{1}{4}$ " splined 14T, DP12/24 ANS B92.1-1970
Max. Torque 95daNm



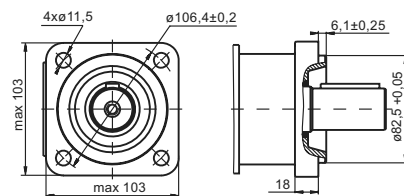
SAE A-4Mount (4Holes) / 4 Şekli (4 Delikli)



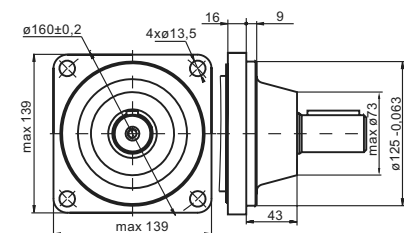
F Magneto Mount (4Holes) / Manyetik Şekli (4 Delikli)



Q Square Mount (4Holes) / Kare Şekli (4 Delikli)



W Wheel Mount / Tekerlek Şekli

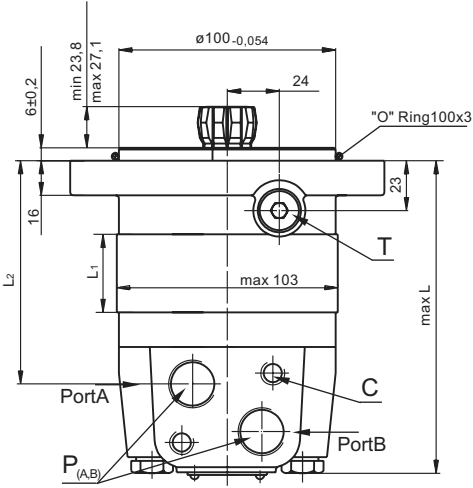


Type/Tipi	L,mm	L ₂ ,mm	L _E ,mm
MS(F, A)80	168	124	173
MS(F, A)100	171	128	177
MS(F, A)125	176	132	181
MS(F, A)160	182	138	187
MS(F, A)200	189	145	194
MS(F, A)250	197	154	203
MS(F, A)315	209	165	214
MS(F, A)400	223	179	228
MS(F, A)475	237	193	242
MS(F, A)525	229	185	234
MS(F, A)565	235	191	240

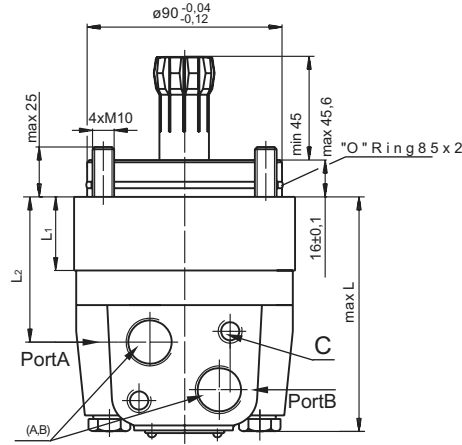


DIMENSIONS AND MOUNTING DATA - MSS- MSV and MSU
ÖLÇÜLENDİRME VE MONTAJ VERİLERİ - MSS- MSV ve MSU

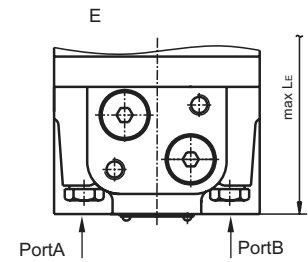
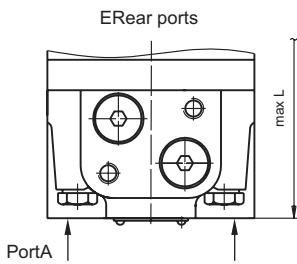
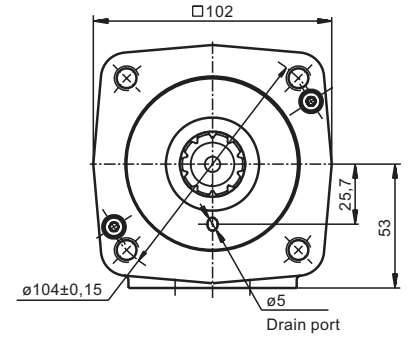
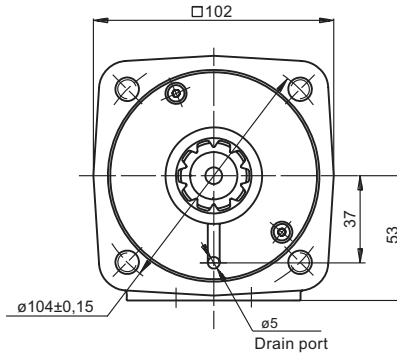
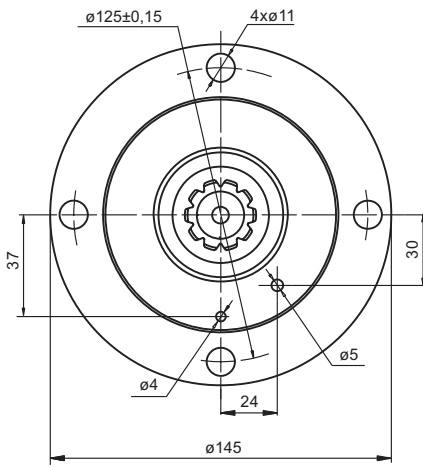
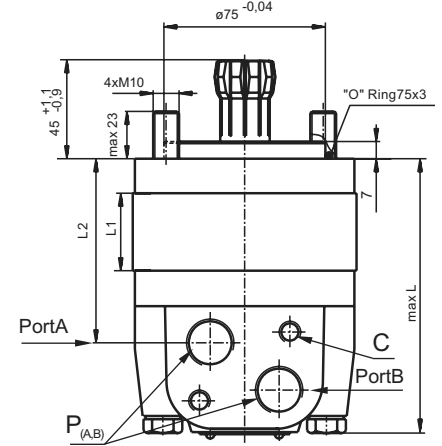
S Short Mount / Kısa Şekli



V Very Short Mount / Çok Kısa Şekli



U Ultra Short Mount / Ultra Kısa Şekli



C: 2xM10-12mm depth
P_(A,B): 2xG1/2or2xM22x1,5-15mm depth
T: G 1/4 or M14x1,5- 12mm depth(plugged)

Type/Tipi	L ₁ ,mm	L ₂ ,mm	L _E ,mm	Type/Tipi	L ₁ ,mm	L ₂ ,mm	L _E ,mm	Type/Tipi	L ₁ ,mm	L ₂ ,mm	L _E ,mm	L ₁ ,mm
MSS 80	125	83	134	MSV 80	91	47	97	MSU 80	105,5	63	111,5	14,0
MSS100	129	87	138	MSV 100	94	50,5	100	MSU 100	109	66,5	115	17,4
MSS125	133	90	141	MSV 125	99	55	105	MSU 125	113	71	119	21,8
MSS160	139	96	147	MSV 160	105	61	111	MSU 160	119	77	125	27,8
MSS200	146	103	154	MSV 200	112	68	118	MSU 200	126	84	132	34,8
MSS250	155	112	163	MSV 250	120	76,5	126	MSU 250	135	92,5	141	43,5
MSS315	166	123	174	MSV 315	132	88	138	MSU 315	146	104	152	54,8
MSS400	181	138	189	MSV 400	146	103	153	MSU 400	160	119	167	69,4
MSS475	194	152	203	MSV 475	160	116	166	MSU 475	174	132	180	82,6
MSS 525	186	144	195	MSV 525	152	108	158	MSU 525	166	124	172	74,5
MSS 565	192	150	201	MSV 565	158	114	164	MSU 565	172	130	178	80,2

**KND**D.O.O.
NOVI SAD
WWW.KND.RS

REZERVNI DELOVI TRAKTORA

MS SERİSİ HİDROLİK MOTORLAR
MS SERIES HYDRAULIC MOTORS**TEKNİK ÖZELLİKLER / SPECIFICATION DATA**

Tipi/Type	MS 80	MS 100	MS 125	MS 160	MS 200	MS 250	MS 315	MS 400	MS 475	MS 565	MS 715	
Displacement / İletilen hacim (cm ³ /rev.)	80.5	100	125.7	195.7	200	250	314.9	397	474.6	564.9	711.9	
Max. Speed (Max. hız) (RPM)	cont./Devamlı	810	750	600	470	375	300	240	185	160	130	
	int.* / Aralıklı	1000	900	720	560	450	360	285	225	190	160	
Max. Torque (Max. Tork) (daNm)	cont./Devamlı	20	25	32	34	40	45	54	58	58	57	
	int.* / Aralıklı	24	30	38	48	50	54	63	69	68	67	
	peak** / Pik	26	32	40	51	65	69	84	85	84	85	
Max. Output (Max. Çıkış) (kW)	cont./Devamlı	16	17.5	17.5	15.5	14	12.5	11.5	10	8.4	6.9	
	int.* / Aralıklı	19	21	21	21	17.5	15	13.5	13	11.3	9.6	
Max. Pressure Drop (Max. Basınç Düşümü) (bar)	cont./Devamlı	175	175	175	175	140	125	120	100	85	70	
	int.* / Aralıklı	210	210	210	210	175	155	140	120	100	85	
	peak** / Pik	225	225	225	225	225	200	185	140	115	100	
Max. Oil Flow (Max. Yağ Akışı) (l/min)	cont./Devamlı	65	75	75	75	75	75	75	75	75	75	
	int.* / Aralıklı	80	90	90	90	90	90	90	90	90	90	
Max. Inlet Pressure (Max. Griş Basıncı) (bar)	cont./Devamlı	210	210	210	210	210	210	210	210	210	210	
	int.* / Aralıklı	250	250	250	250	250	250	250	250	250	250	
	peak** / Pik	300	300	300	300	300	300	300	300	300	300	
Max. Return Pressure w/o Drain Line or Max. Pressure in Drain (bar) (Dreyn hatsız ve dreyn hattındaki max. basınç)	cont. 0-100 RPM	100	100	100	100	100	100	100	100	100	100	
	cont. 100-300 RPM	50	50	50	50	50	50	50	50	50	50	
	cont. 300 RPM	20	20	20	20	20	-	-	-	-	-	
	int.* 0 - max.RPM	100	100	100	100	100	100	100	100	100	100	
Max. Return Pressure with Drain Line (bar) (Dreyn hatlı max dönüş basınç)	cont./Devamlı	140	140	140	140	140	140	140	140	140	140	
	int.* / Aralıklı	175	175	175	175	175	175	175	175	175	175	
	peak** / Pik	210	210	210	210	210	210	210	210	210	210	
Max. Starting Pressure with Unloaded Shaft, (bar) (Yüklemesiz shaft ile başlama basıncı)		12	10	10	8	8	80	8	8	8	8	
Min Starting Torque (min başlama Torku) (daNm)	at max. press. drop. cont.	16.5	20.5	26	28	33	36	44	47	47	47	
	at max. press. drop. Int.*	19.5	25	31	39	41	44	52	55	55	55	
Min. Speed***, (RPM)		10	10	8	8	6	6	5	5	5	5	
weight, avg. (kg)	MS(F) (E)	9.8(10.2)	10(10.4)	10.3(10.7)	10.7(11.1)	11.1(11.5)	11.6(12)	12.3(12.7)	13.2(13.6)	14(14.4)	14.9(15.3)	17.4(17.8)
	MSW(E)	10.3(10.7)	10.5(10.9)	10.8(11.2)	11.2(11.6)	11.6(12)	12.1(12.5)	12.8(13.2)	13.7(14.1)	14.5(14.9)	15.4(15.8)	17.9(18.3)
	MSS(Z) (E)	7.8(10.2)	8(8.4)	8.3(8.7)	8.7(9.1)	9.1(9.5)	9.6(10)	10.3(10.7)	11.2(11.6)	12(12.4)	12.9(12.3)	15.4(15.8)
	MSV(E)	5.6(10.2)	5.9(6.3)	6.2(6.6)	6.6(7)	7(7.4)	7.5(7.9)	8.2(8.6)	9.1(9.5)	9.9(10.3)	10.8(11.2)	13.3(13.7)
	MSQ(E)	10.2(10.6)	10.4(10.8)	10.7(11.1)	11.1(11.5)	11.5(11.9)	12(12.4)	12.7(13.1)	13.6(14)	14.4(14.8)	15.3(15.7)	17.8(18.2)
	MSB(E)	16.8(17.2)	17(17.4)	17.3(17.7)	17.7(18.1)	18.1(18.5)	18.6(19)	19.3(19.7)	20.2(20.6)	21(21.4)	21.9(22.3)	24.4(24.8)

* Intermittent operation: The permissible values may occur for max. 10% of every minute.

** Peak load: The permissible values may occur for max. 1% of every minute.

*** For speed of 5 RPM lower than even, consult factory or your regional manager.

1) Intermittent speed and intermittent pressure must not occur simultaneously.

2) Recommended filtration is per ISO clean lines code 20/16. A nominal filtration of 25 micron or better.

3) Recommend using a premium quality, anti-wear type mineral based hydraulic oil, HLP (DIN51524) or HM (ISO 6743/4) if using synthetic fluids consult the factory for alternative seal materials.

4) Recommended minimum oil viscosity 13 mm²/s at 50 C.

5) Recommended maximum system operation temperature is 82 C.

6) To assure optimum motor life fill with fluid prior to load and run at moderate load and speed for 10-15 minutes.

* Aralıklı Operasyonu: İzin verilebilir değerler her dakikanın maks %10 için oluşabilir.

** Aşırı Yük: Müsaade edilebilir değerler her dakikanın %1 için oluşabilir.

*** 10 RPM ve aşağısı hızlar için fabrikaya veya bölge bayiliğine başvurunuz.

1) Aralıklı hız ve aralıklı basınç düşüşleri aynı zamanda olmalıdır.

2) Tavsiye edilen filtrasyon ISO 20/16, nominal filtrasyon 25 mikron ve iyisi.

3) Tavsiye edilen hidrolik yağ üstün kalitede anti-wear tipi mineral kökenlidir.

4) Tavsiye edilen en düşük yağ viskozitesi operasyon sıcaklığının 133 mm²/s'dir.

5) Tavsiye edilen en yüksek sistem operasyon sıcaklığı 82 C'dir.

6) En uzun motor ömrünü sağlamak için yüklemeye önce sıvı ile doldurulup düşük bir yük ve hızda 10-15 dk. çalıştırılır.